



# EVENTS AT BATH'S HISTORIC VENUES

---

ASSEMBLY ROOMS  
ROMAN BATHS & PUMP ROOM  
VICTORIA ART GALLERY  
GUILDHALL

## CO

CO

<b>Our Venues</b>	<b>4</b>	<b>Roman Baths</b>	Temple Pediment	<b>Guildhall</b>	<b>24</b>	<b>Victoria Art Gallery</b>	<b>30</b>	<b>Drinks And Dinners</b>	<b>40</b>	<b>Parties</b>	<b>46</b>	<b>Further Information</b>	<b>50</b>
<b>Assembly Rooms</b>	<b>8</b>	<b>and Pump Room</b>	16	and Aquae Sulis	23	Banqueting Room &		Roman Baths and		<b>Other Events</b>	<b>48</b>	<b>Catering</b>	<b>52</b>
Ball Room	12	Great Bath	20	Kingston and		Aix-En-Provence Room	28	Pump Room	43			<b>Here To Help You</b>	<b>54</b>
Tea Room	13	Pump Room	21	drawing room	23	Council Chamber &		Victoria Art Gallery	43			<b>Venues Overview</b>	<b>56</b>
Great Octagon	14	Terrace and				Brunswick Room	29	Assembly Rooms	44			<b>Capacities</b>	<b>60</b>
Card Room	15	Reception Hall	22					Roman Baths and				<b>We'd Love To Meet You</b>	<b>62</b>
Fashion Museum	15							Pump Room	45				
								Guildhall					



# BATH: A WORLD HERITAGE SITE

Recognised as one of the most beautiful cities in the world, Bath is the only city in Britain to enjoy UNESCO World Heritage status. With its stylish combination of impressive architecture and breath-taking scenery, Bath will certainly impress your guests.

Built around Britain's only hot springs, Bath gained its greatest importance first in Roman and then again in Georgian times. Today, the city reflects two thousand years of continuous habitation, with the spectacular medieval Abbey soaring above the 2,000 year-old Roman Baths and elegant Georgian Pump Room. The city is also culturally rich, hosting numerous festivals celebrating everything from music, comedy and food to children's literature and Jane Austen. The city is also home to the nationally renowned Theatre Royal.

Come to Bath and luxuriate in the natural hot springs at Thermae Bath Spa or indulge yourself in the city's abundant boutique shops. If you are interested in sport, why not catch a game at Bath Rugby ground, explore the delightful cycle routes into the Somerset countryside or spend a day at Bath races?

When you also consider its convenient location and easy access to the rest of the UK, we hope you'll agree that Bath really is the perfect destination for any event.

Bath Tourism Plus

Recognised as one of the most beautiful cities in the world, Bath is the only city in Britain to enjoy UNESCO World Heritage status. With its stylish combination of impressive architecture and breath-taking scenery, Bath will certainly impress your guests.

Built around Britain's only hot springs, Bath gained its greatest importance first in Roman and then again in Georgian times. Today, the city reflects two thousand years of continuous habitation, with the spectacular medieval Abbey soaring above the 2,000 year-old Roman Baths and elegant Georgian Pump Room. The city is also culturally rich, hosting numerous festivals celebrating everything from music, comedy and food to children's literature and Jane Austen. The city is also home to the nationally renowned Theatre Royal.

Come to Bath and luxuriate in the natural hot springs at Thermae Bath Spa or indulge yourself in the city's abundant boutique shops. If you are interested in sport, why not catch a game at Bath Rugby ground, explore the delightful cycle routes into the Somerset countryside or spend a day at Bath races?

When you also consider its convenient location and easy access to the rest of the UK, we hope you'll agree that Bath really is the perfect destination for any event.

<b>Our Venues</b>	<b>4</b>	<b>Roman Baths</b>		Temple Pediment		<b>Guildhall</b>	<b>24</b>	<b>Victoria Art Gallery</b>	<b>30</b>	<b>Drinks And Dinners</b>	<b>40</b>	<b>Parties</b>	<b>46</b>	<b>Further Information</b>	<b>50</b>
<b>Assembly Rooms</b>	<b>8</b>	<b>and Pump Room</b>	<b>16</b>	and Aquae Sulis	23	Banqueting Room &		<b>Conferences</b>		Roman Baths and		<b>Other Events</b>	<b>48</b>	<b>Catering</b>	<b>52</b>
Ball Room	12	Great Bath	20	Kingston and		Aix-En-Provence Room	28	<b>and Meetings</b>	<b>34</b>	Pump Room	43			<b>Here To Help You</b>	<b>54</b>
Tea Room	13	Pump Room	21	drawing room	23	Council Chamber &		Assembly Rooms	37	Victoria Art Gallery	43			<b>Venues Overview</b>	<b>56</b>
Great Octagon	14	Terrace and				Brunswick Room	29	Roman Baths and		Assembly Rooms	44			<b>Capacities</b>	<b>60</b>
Card Room	15	Reception Hall	22					Pump Room	38	Guildhall	45			<b>We'd Love To Meet You</b>	<b>62</b>
Fashion Museum	15							Guildhall	39						



BATH: A WORLD HERITAGE SITE

863 BC

The legendary Prince Bladud discovers Bath’s healing thermal springs



c75AD

Romans build the sacred baths and temple of Aquae Sulis

c400

Romans withdraw and Aquae Sulis falls into ruin

577

Bath captured by Saxons

973

Edgar crowned the first king of all England in Bath’s Saxon cathedral

c1090

King’s Bath built over the Roman Sacred Spring

1174

St. John’s Hospital built beside the Cross Bath

1499

Building of present Abbey started

1539

Bath’s monastery closed by King Henry VIII; incomplete Abbey left to disintegrate

1574

Queen Elizabeth I orders restoration of Abbey and promotion of hot baths

1580s

Queen’s Bath built beside King’s Bath

1617

Abbey Church completed

1661

Drinking Pump installed at the King’s Bath

1702

Bath’s profile is raised by Queen Anne’s visits

1704

Richard ‘Beau’ Nash appointed Master of Ceremonies

1706

First Pump Room opens

1727

Minerva’s Head discovered beneath Stall Street

1742

Royal Mineral Water Hospital opens, designed by John Wood the Elder

1767

Royal Crescent started, designed by John Wood the Younger

1771

Assembly Rooms built, designed by John Wood the Younger



1775

Guildhall built, designed by Thomas Baldwin

1801

Jane Austen moves to lodgings in Bath

1840

World’s first postage stamp sent from Bath Post Office

1880

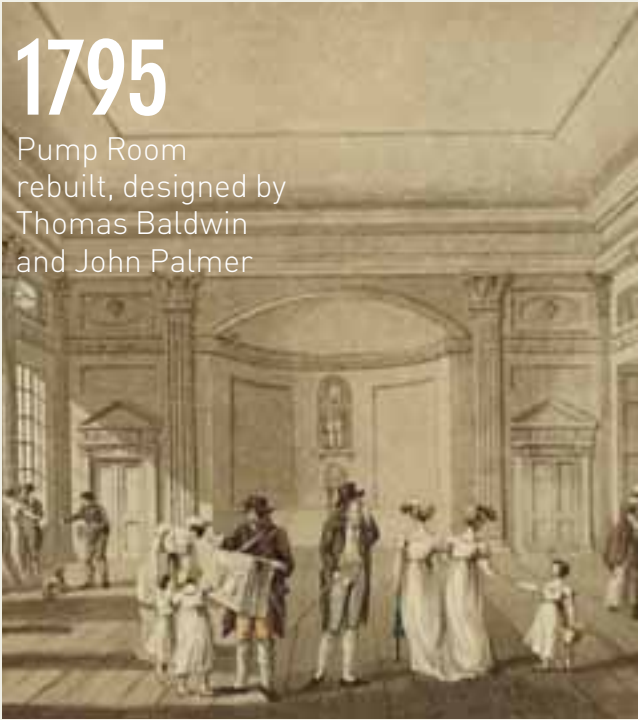
Roman Baths discovered

1897

William Harbutt invents plasticine in Bath

1795

Pump Room rebuilt, designed by Thomas Baldwin and John Palmer



1897

Roman Baths opens to visitors



1900

Victoria Art Gallery opens



2002

HM The Queen visits the Guildhall, Pump Room and Roman Baths

2003

Free public concert by The Three Tenors in the Royal Crescent

2006

Thermae Bath Spa opens

2007

‘The Duchess’ with Keira Knightley and Ralph Fiennes, filmed in the Assembly Rooms

1987

Bath designated a World Heritage Site by UNESCO



<b>Our Venues</b>	<b>4</b>	<b>Roman Baths and Pump Room</b>	<b>16</b>	Temple Pediment and Aquae Sulis	23	<b>Guildhall</b>	<b>24</b>	<b>Victoria Art Gallery</b>	<b>30</b>	<b>Drinks And Dinners</b>	<b>40</b>	<b>Parties Other Events</b>	<b>46</b>	<b>Further Information</b>	<b>50</b>
<b>Assembly Rooms</b>	<b>8</b>					Banqueting Room & Aix-En-Provence Room	28	<b>Conferences and Meetings</b>	<b>34</b>	Roman Baths and Pump Room	43		<b>48</b>	<b>Catering</b>	<b>52</b>
Ball Room	12	Great Bath	20	Kingston and drawing room	23	Council Chamber & Brunswick Room	29	Assembly Rooms	37	Victoria Art Gallery	43			<b>Here To Help You</b>	<b>54</b>
Tea Room	13	Pump Room	21					Roman Baths and Pump Room	38	Assembly Rooms	44			<b>Venues Overview</b>	<b>56</b>
Great Octagon	14	Terrace and Reception Hall	22					Guildhall	39	Guildhall	45			<b>Capacities</b>	<b>60</b>
Card Room	15													<b>We’d Love To Meet You</b>	<b>62</b>
Fashion Museum	15														





# OUR VENUES

With a prime selection of venues to choose from and really flexible spaces available, it is hard to describe everything we can do for you. The historic nature of the venues does mean there are certain restrictions, but we are still able to accommodate a surprisingly wide variety of events. We hope that the following information will give you a flavour of what we can offer – we would be delighted to discuss how these blank canvasses may be transformed for your event.

David Naton Photography



# OUR VENUES

With a prime selection of venues to choose from and really flexible spaces available, it is hard to describe everything we can do for you. The historic nature of the venues does mean there are certain restrictions, but we are still able to accommodate a surprisingly wide variety of events. We hope that the following information will give you a flavour of what we can offer – we would be delighted to discuss how these blank canvasses may be transformed for your event.

David Naton Photography







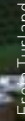
CONFERENCES AND MEETINGS	37
DRINKS RECEPTIONS AND DINNERS	44
PARTIES	47
OTHER EVENTS	48



CONFERENCES AND MEETINGS	38
DRINKS RECEPTIONS AND DINNERS	43
PARTIES	47
OTHER EVENTS	48



CONFERENCES AND MEETINGS	39
DRINKS RECEPTIONS AND DINNERS	45
PARTIES	47
OTHER EVENTS	48



DRINKS RECEPTIONS AND DINNERS	43
OTHER EVENTS	48



Adrian and Lorna Stokes

<b>Our Venues</b>	<b>4</b>	<b>Roman Baths</b>	Temple Pediment	<b>Guildhall</b>	<b>24</b>	<b>Victoria Art Gallery</b>	<b>30</b>	<b>Drinks And Dinners</b>	<b>40</b>	<b>Parties</b>	<b>46</b>	<b>Further Information</b>	<b>50</b>
<b>Assembly Rooms</b>	<b>8</b>	<b>and Pump Room</b>	16	and Aquae Sulis	23	Banqueting Room &		Roman Baths and		<b>Other Events</b>	<b>48</b>	<b>Catering</b>	<b>52</b>
Ball Room	12	Great Bath	20	Kingston and		Aix-En-Provence Room	28	Pump Room	43			<b>Here To Help You</b>	<b>54</b>
Tea Room	13	Pump Room	21	drawing room	23	Council Chamber &		Victoria Art Gallery	43			<b>Venues Overview</b>	<b>56</b>
Great Octagon	14	Terrace and				Brunswick Room	29	Assembly Rooms	44			<b>Capacities</b>	<b>60</b>
Card Room	15	Reception Hall	22					Roman Baths and				<b>We'd Love To Meet You</b>	<b>62</b>
Fashion Museum	15							Pump Room	45				
								Guildhall					



A wide-angle photograph of a grand, two-story assembly room. The room features a high, vaulted ceiling with decorative moldings. The ground floor is supported by a series of tall, white columns. A balcony with a black metal railing runs along the upper level. Several large, ornate chandeliers hang from the ceiling, casting a warm glow. Large windows on the left side allow natural light to enter. In the foreground, a dark wooden bench is visible. The overall atmosphere is one of elegance and historical grandeur.

<b>Our Venues</b>	<b>4</b>	<b>Roman Baths</b>		Temple Pediment		<b>Guildhall</b>	<b>24</b>	<b>Victoria Art Gallery</b>	<b>30</b>	<b>Drinks And Dinners</b>	<b>40</b>	<b>Parties</b>	<b>46</b>	<b>Further Information</b>	<b>50</b>
<b>Assembly Rooms</b>	<b>8</b>	<b>and Pump Room</b>	<b>16</b>	and Aquae Sulis	23	Banqueting Room &				Roman Baths and		<b>Other Events</b>	<b>48</b>	<b>Catering</b>	<b>52</b>
Ball Room	12	Great Bath	20	Kingston and		Aix-En-Provence Room	28	<b>Conferences</b>		Pump Room	43			<b>Here To Help You</b>	<b>54</b>
Tea Room	13	Pump Room	21	drawing room	23	Council Chamber &		<b>and Meetings</b>	<b>34</b>	Victoria Art Gallery	43			<b>Venues Overview</b>	<b>56</b>
Great Octagon	14	Terrace and				Brunswick Room	29	Assembly Rooms	37	Assembly Rooms	44			<b>Capacities</b>	<b>60</b>
Card Room	15	Reception Hall	22					Roman Baths and		Guildhall	45			<b>We'd Love To Meet You</b>	<b>62</b>
Fashion Museum	15							Pump Room	38						
								Guildhall	39						



## ASSEMBLY ROOMS

Designed by John Wood the Younger in 1769 for entertainment, tea drinking and dancing, the Assembly Rooms were at the heart of fashionable Georgian society. When completed in 1771, they were described as 'the most noble and elegant of any in the kingdom'. Guests would gather in the rooms in the evening for balls, concerts and other social functions, or simply to play cards and socialise.



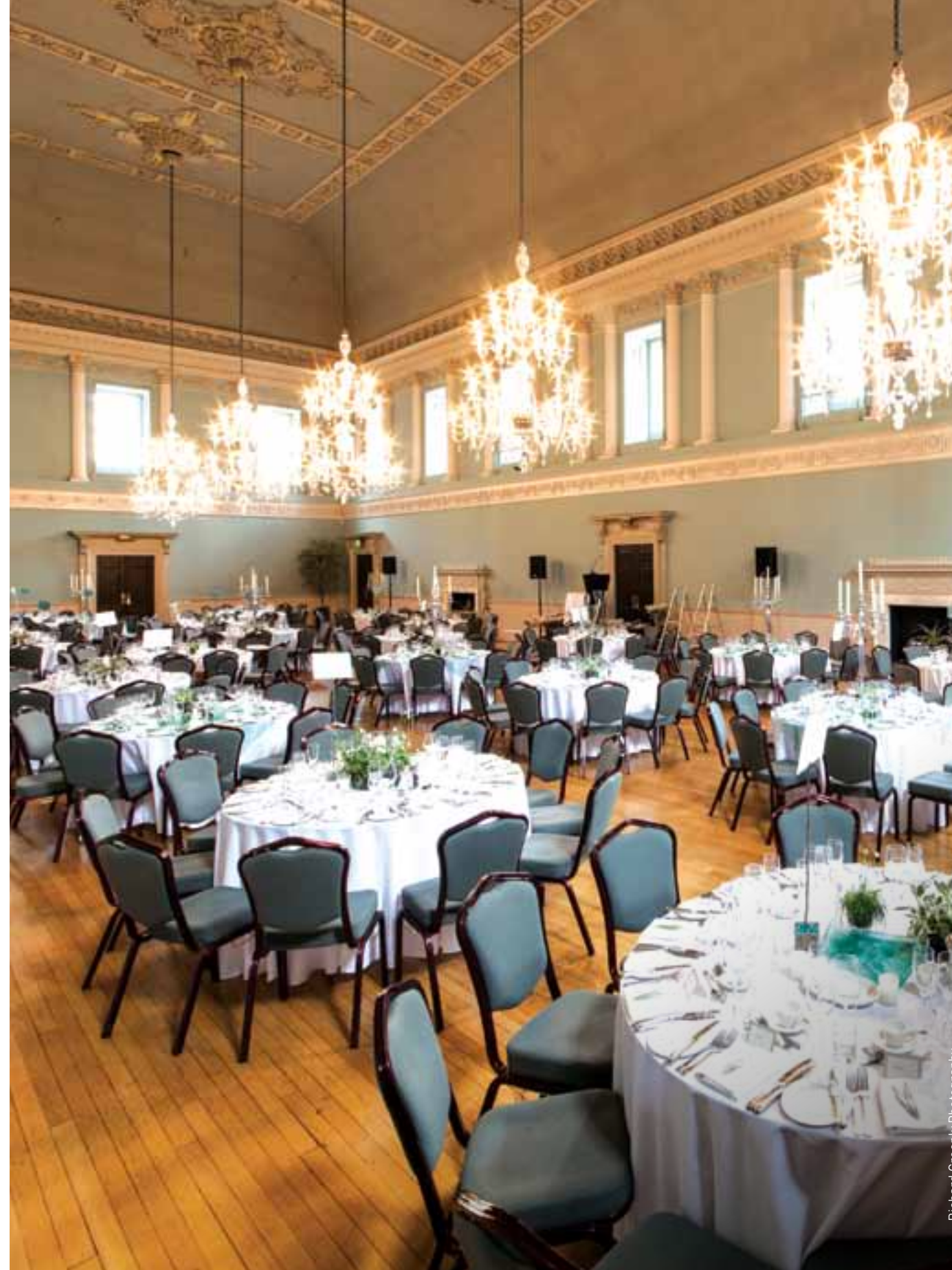
Scenes such as this feature in the novels of Jane Austen, who lived in Bath with her parents and sister from 1801 to 1805. Her two novels set in Bath, *Northanger Abbey* and *Persuasion*, both mention the Assembly Rooms, which she called the "Upper Rooms".

Charles Dickens visited Bath on several occasions. He gave public readings in the Assembly Rooms and mentions them in the *Pickwick Papers* (published in 1837): "In the ball-room, the long card-room, the octagonal card-room, the staircases, and the passages, the hum of many voices, and the sound of many feet, were perfectly bewildering. Dresses rustled, feathers waved, lights shone, and jewels sparkled".

Adaptations of several novels have been filmed in the Assembly Rooms, in addition to films such as *The Duchess* (2008) with Keira Knightley and Ralph Fiennes.

**Above:** The Fancy Ball at the Upper Rooms by Robert Cruikshank, 1825.

10



A large, ornate chandelier hangs from the ceiling of a grand hall. The chandelier is multi-tiered, with many lit candles and intricate crystal or glasswork. In the background, a large window with multiple panes is visible, set within a classical architectural frame. The lighting is warm and ambient.

AS ALWAYS, IT IS A PLEASURE TO  
WORK WITH YOU AND YOUR TEAMS.  
NOTHING IS EVER TOO MUCH  
TROUBLE, THE QUALITY OF THE  
FOOD WAS AMAZING..."

Gill Winker, Knorr Bremse Awards Dinner

**Above:** Chandeliers in the Tea Room

Left: Party in the Ball Room

<b>Our Venues</b>	<b>4</b>	<b>Roman Baths</b>		Temple Pediment
<b>Assembly Rooms</b>	<b>8</b>	<b>and Pump Room</b>	<b>16</b>	and Aquae Sulis
Ball Room	12	Great Bath	20	Kingston and
Tea Room	13	Pump Room	21	drawing room
Great Octagon	14	Terrace and		
Card Room	15	Reception Hall	22	
Fashion Museum	15			

	<b>Guildhall</b>	<b>24</b>
23	Banqueting Room & Aix-En-Provence Room	28
23	Council Chamber & Brunswick Room	29

<b>Victoria Art Gallery</b>	<b>30</b>
<b>Conferences and Meetings</b>	<b>34</b>
Assembly Rooms	37
Roman Baths and Pump Room	38
Guildhall	39

<b>Drinks And Dinners</b>	<b>40</b>
Roman Baths and Pump Room	43
Victoria Art Gallery	43
Assembly Rooms	44
Guildhall	45

Parties  
Other Events

46	Further Information	50
48	Catering	52
	Here To Help You	54
	Venues Overview	56
	Capacities	60
	We'd Love To Meet You	62

11



## BALL ROOM



## TEA ROOM

A large group of people, mostly men in suits, are seated at round tables in a grand, ornate hall. The room features high ceilings, large columns, and a balcony with a railing. The tables are set with white tablecloths, glassware, and plates of food. The atmosphere appears to be formal and elegant.

Freia Turland

<b>Our Venues</b>	<b>4</b>	<b>Roman Baths</b>		Temple Pediment		<b>Guildhall</b>	<b>24</b>	<b>Victoria Art Gallery</b>	<b>30</b>	<b>Drinks And Dinners</b>	<b>40</b>	<b>Parties</b>	<b>46</b>	<b>Further Information</b>	<b>50</b>
<b>Assembly Rooms</b>	<b>8</b>	<b>and Pump Room</b>	<b>16</b>	and Aquae Sulis	23	Banqueting Room &		<b>Conferences</b>		Roman Baths and		<b>Other Events</b>	<b>48</b>	<b>Catering</b>	<b>52</b>
Ball Room	12	Great Bath	20	Kingston and		Aix-En-Provence Room	28	<b>and Meetings</b>	<b>34</b>	Pump Room	43			<b>Here To Help You</b>	<b>54</b>
Tea Room	13	Pump Room	21	drawing room	23	Council Chamber &		Assembly Rooms	37	Victoria Art Gallery	43			<b>Venues Overview</b>	<b>56</b>
Great Octagon	14	Terrace and				Brunswick Room	29	Roman Baths and		Assembly Rooms	44			<b>Capacities</b>	<b>60</b>
Card Room	15	Reception Hall	22					Pump Room	38	Guildhall	45			<b>We'd Love To Meet You</b>	<b>62</b>
Fashion Museum	15							Guildhall	39						



# GREAT OCTAGON

**Right:** Captain William Wade by Gainsborough, 1771. Master of Ceremonies at the Assembly Rooms.



10: A person who is



Freia Turland

## CARD ROOM

A woman in a white, ornate gown holding a small object aloft, with a sign in the background that reads "DRESS OF THE YEAR".

**Right:** Dress of the Year 2011, Sarah Burton's Fall collection for Alexander McQueen

<b>Our Venues</b>	<b>4</b>	<b>Roman Baths</b>	Temple Pediment	<b>Guildhall</b>	<b>24</b>	<b>Victoria Art Gallery</b>	<b>30</b>	<b>Drinks And Dinners</b>	<b>40</b>	<b>Parties</b>	<b>46</b>	<b>Further Information</b>	<b>50</b>
<b>Assembly Rooms</b>	<b>8</b>	<b>and Pump Room</b>	16	and Aquae Sulis	23	Banqueting Room &		Roman Baths and		<b>Other Events</b>	<b>48</b>	<b>Catering</b>	<b>52</b>
Ball Room	12	Great Bath	20	Kingston and		Aix-En-Provence Room	28	Pump Room	43			<b>Here To Help You</b>	<b>54</b>
Tea Room	13	Pump Room	21	drawing room	23	Council Chamber &		Victoria Art Gallery	43			<b>Venues Overview</b>	<b>56</b>
Great Octagon	14	Terrace and				Brunswick Room	29	Assembly Rooms	44			<b>Capacities</b>	<b>60</b>
Card Room	15	Reception Hall	22					Roman Baths and				<b>We'd Love To Meet You</b>	<b>62</b>
Fashion Museum	15							Pump Room	45				
								Guildhall					



# ROMAN BATHS AND PUMP ROOM

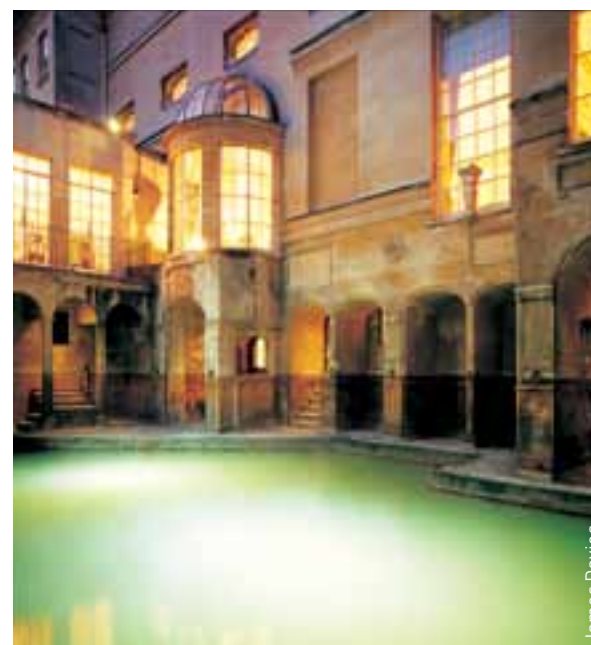
<b>Our Venues</b>	<b>4</b>	<b>Roman Baths</b>	Temple Pediment	<b>Guildhall</b>	<b>24</b>	<b>Victoria Art Gallery</b>	<b>30</b>	<b>Drinks And Dinners</b>	<b>40</b>	<b>Parties</b>	<b>46</b>	<b>Further Information</b>	<b>50</b>
<b>Assembly Rooms</b>	<b>8</b>	<b>and Pump Room</b>	16	and Aquae Sulis	23	Banqueting Room &		Roman Baths and		<b>Other Events</b>	<b>48</b>	<b>Catering</b>	<b>52</b>
Ball Room	12	Great Bath	20	Kingston and		Aix-En-Provence Room	28	Pump Room	43			<b>Here To Help You</b>	<b>54</b>
Tea Room	13	Pump Room	21	drawing room	23	Council Chamber &		Victoria Art Gallery	43			<b>Venues Overview</b>	<b>56</b>
Great Octagon	14	Terrace and				Brunswick Room	29	Assembly Rooms	44			<b>Capacities</b>	<b>60</b>
Card Room	15	Reception Hall	22					Roman Baths and				<b>We'd Love To Meet You</b>	<b>62</b>
Fashion Museum	15							Pump Room	45				
								Guildhall					



From the first century to the twenty first century, people have been drawn to this place for entertainment and relaxation.

Right: Pump Room

Below: 'Pump Room' coloured aquatint by John Hill after JC Nattes, 1804.



Following the Roman invasion of Britain, the Romans built a grand religious spa complex on this site in c.75AD, which they dedicated to the deities Sulis and Minerva, the latter being their own goddess of healing. The hot baths, which yield around 1,200,000 litres of water daily at 46°C, were in use between the 1st and 4th centuries.

In 1878, the city surveyor architect Major Charles Davis, worried by a leak in the King's Bath, decided to explore the ground around it. In doing so he found Roman remains and by 1880 had uncovered large parts of the Great Bath. The Reception Hall and Terrace were completed in the late 19th century, providing the city with a monument for which it is now famed throughout the world.

<b>Our Venues</b>	<b>4</b>	<b>Roman Baths and Pump Room</b>	<b>16</b>	Temple Pediment and Aquae Sulis	23	<b>Guildhall</b>	<b>24</b>	<b>Victoria Art Gallery</b>	<b>30</b>	<b>Drinks And Dinners</b>	<b>40</b>	<b>Parties Other Events</b>	<b>46</b>	<b>Further Information</b>	<b>50</b>
<b>Assembly Rooms</b>	<b>8</b>	Great Bath	20	Kingston and		Banqueting Room &		<b>Conferences and Meetings</b>	<b>34</b>	Roman Baths and			<b>48</b>	<b>Catering</b>	<b>52</b>
Ball Room	12	Pump Room	21	drawing room	23	Aix-En-Provence Room	28			Pump Room	43			<b>Here To Help You</b>	<b>54</b>
Tea Room	13	Terrace and				Council Chamber &		Assembly Rooms	37	Victoria Art Gallery	43			<b>Venues Overview</b>	<b>56</b>
Great Octagon	14	Reception Hall	22			Brunswick Room	29	Roman Baths and		Assembly Rooms	44			<b>Capacities</b>	<b>60</b>
Card Room	15							Pump Room	38	Guildhall	45			<b>We'd Love To Meet You</b>	<b>62</b>
Fashion Museum	15							Guildhall	39						





## ROMAN BATHS AND PUMP ROOM

## GREAT BATH

At the heart of the World Heritage site and dating back nearly 2000 years, the Roman Baths offer a unique and atmospheric setting for a memorable event. The Great Bath was once covered by a vast roof and, fed by Britain's only naturally hot spring, it was the centrepiece of the public bathing complex. It was also an area for socialising and relaxing, a tradition which continues to this day. At night, with its steaming waters and flickering torches, the Great Bath is sure to wow your guests.

Colin Hawkins

20

At the heart of the World Heritage site and dating back nearly 2000 years, the Roman Baths offer a unique and atmospheric setting for a memorable event. The Great Bath was once covered by a vast roof and, fed by Britain's only naturally hot spring, it was the centrepiece of the public bathing complex. It was also an area for socialising and relaxing, a tradition which continues to this day. At night, with its steaming waters and flickering torches, the Great Bath is sure to wow your guests.

At the heart of the World Heritage site and dating back nearly 2000 years, the Roman Baths offer a unique and atmospheric setting for a memorable event. The Great Bath was once covered by a vast roof and, fed by Britain's only naturally hot spring, it was the centrepiece of the public bathing complex. It was also an area for socialising and relaxing, a tradition which continues to this day. At night, with its steaming waters and flickering torches, the Great Bath is sure to wow your guests.



Once the focal point of Georgian society, the beautiful Pump Room remains the social heart of the city. The room features Corinthian columns, tall windows, a glittering crystal chandelier, the thermal spa fountain and the historic long case Tompion Clock. The impressive Grade I Listed venue also has a stage for live music and a fine dance floor for an evening of fun and relaxation. The adjoining King's Lounge, overlooking the Romans' sacred spring, makes a convenient location for a bar.

<b>Our Venues</b>	<b>4</b>	<b>Roman Baths</b>		Temple Pediment		<b>Guildhall</b>	<b>24</b>	<b>Victoria Art Gallery</b>	<b>30</b>	<b>Drinks And Dinners</b>	<b>40</b>	<b>Parties</b>	<b>46</b>	<b>Further Information</b>	<b>50</b>
<b>Assembly Rooms</b>	<b>8</b>	<b>and Pump Room</b>	<b>16</b>	and Aquae Sulis	23	Banqueting Room &		<b>Conferences</b>		Roman Baths and		<b>Other Events</b>	<b>48</b>	<b>Catering</b>	<b>52</b>
Ball Room	12	Great Bath	20	Kingston and		Aix-En-Provence Room	28	<b>and Meetings</b>	<b>34</b>	Pump Room	43			<b>Here To Help You</b>	<b>54</b>
Tea Room	13	Pump Room	21	drawing room	23	Council Chamber &		Assembly Rooms	37	Victoria Art Gallery	43			<b>Venues Overview</b>	<b>56</b>
Great Octagon	14	Terrace and				Brunswick Room	29	Roman Baths and		Assembly Rooms	44			<b>Capacities</b>	<b>60</b>
Card Room	15	Reception Hall	22					Pump Room	38	Guildhall	45			<b>We'd Love To Meet You</b>	<b>62</b>
Fashion Museum	15							Guildhall	39						



## ROMAN BATHS AND PUMP ROOM



A photograph of a long, narrow dining room with a high ceiling. The room is filled with people seated at long tables covered with white cloths. The walls are decorated with framed pictures and a large floral arrangement. The lighting is warm and ambient.

Lee N'iel

## A large, ornate room with a high ceiling, a chandelier, and a large rug. The room features a curved wall with two large arched windows and a central decorative mirror. Several dark chairs are arranged along the wall. The floor is covered with a large, patterned rug.

## 23

<b>Our Venues</b>	<b>4</b>	<b>Roman Baths</b>	Temple Pediment	<b>Guildhall</b>	<b>24</b>	<b>Victoria Art Gallery</b>	<b>30</b>	<b>Drinks And Dinners</b>	<b>40</b>	<b>Parties</b>	<b>46</b>	<b>Further Information</b>	<b>50</b>
<b>Assembly Rooms</b>	<b>8</b>	<b>and Pump Room</b>	16	and Aquae Sulis	23	Banqueting Room &		Roman Baths and		<b>Other Events</b>	<b>48</b>	<b>Catering</b>	<b>52</b>
Ball Room	12	Great Bath	20	Kingston and		Aix-En-Provence Room	28	Pump Room	43			<b>Here To Help You</b>	<b>54</b>
Tea Room	13	Pump Room	21	drawing room	23	Council Chamber &		Victoria Art Gallery	43			<b>Venues Overview</b>	<b>56</b>
Great Octagon	14	Terrace and				Brunswick Room	29	Assembly Rooms	44			<b>Capacities</b>	<b>60</b>
Card Room	15	Reception Hall	22					Roman Baths and				<b>We'd Love To Meet You</b>	<b>62</b>
Fashion Museum	15							Pump Room	45				
								Guildhall	39				



A wide-angle photograph of the interior of the Guildhall, a grand hall with a high ceiling, ornate chandeliers, and classical architecture. The room features light green walls, a balcony with a decorative railing, and several large portraits. Rows of green upholstered chairs are arranged along the walls. The floor is polished wood.

<b>Our Venues</b>	<b>4</b>	<b>Roman Baths</b>		Temple Pediment		<b>Guildhall</b>	<b>24</b>	<b>Victoria Art Gallery</b>	<b>30</b>	<b>Drinks And Dinners</b>	<b>40</b>	<b>Parties</b>	<b>46</b>	<b>Further Information</b>	<b>50</b>
<b>Assembly Rooms</b>	<b>8</b>	<b>and Pump Room</b>	<b>16</b>	and Aquae Sulis	23	Banqueting Room &				Roman Baths and		<b>Other Events</b>	<b>48</b>	<b>Catering</b>	<b>52</b>
Ball Room	12	Great Bath	20	Kingston and		Aix-En-Provence Room	28	<b>Conferences</b>		Pump Room	43			<b>Here To Help You</b>	<b>54</b>
Tea Room	13	Pump Room	21	drawing room	23	Council Chamber &		<b>and Meetings</b>	<b>34</b>	Victoria Art Gallery	43			<b>Venues Overview</b>	<b>56</b>
Great Octagon	14	Terrace and				Brunswick Room	29	Assembly Rooms	37	Assembly Rooms	44			<b>Capacities</b>	<b>60</b>
Card Room	15	Reception Hall	22					Roman Baths and		Guildhall	45			<b>We'd Love To Meet You</b>	<b>62</b>
Fashion Museum	15							Pump Room	38						
								Guildhall	39						



Built by Thomas Baldwin in 1775, this beautiful building replaced a Stuart building built in 1625. The Stuart building and the Georgian one after it were the centre of Bath's administrative and judicial life for more than 350 years, as well as a venue for corporation celebrations, balls, plays, and other events. This tradition continues to this day, although civic hospitality is on a more modest scale and many of the functions of the modern Council take place in other buildings. The Register Office, Mayor's Parlour and City Archives are still housed here.

**Below:** Sir W Tite, MP for Bath, 1855 - 1873. Bust in Guildhall foyer.

Due to the outstanding architecture inside and out, the Guildhall was granted a Grade I listing status and with its imposing façade it is a masterpiece of the neo-classical style.

Heritage Railway Association  
AGM Event at the Guildhall

26

27

<b>Our Venues</b>	<b>4</b>	<b>Roman Baths</b>	Temple Pediment	<b>Guildhall</b>	<b>24</b>	<b>Victoria Art Gallery</b>	<b>30</b>	<b>Drinks And Dinners</b>	<b>40</b>	<b>Parties</b>	<b>46</b>	<b>Further Information</b>	<b>50</b>
<b>Assembly Rooms</b>	<b>8</b>	<b>and Pump Room</b>	16	and Aquae Sulis	23	Banqueting Room &		Roman Baths and		<b>Other Events</b>	<b>48</b>	<b>Catering</b>	<b>52</b>
Ball Room	12	Great Bath	20	Kingston and		Aix-En-Provence Room	28	Pump Room	43			<b>Here To Help You</b>	<b>54</b>
Tea Room	13	Pump Room	21	drawing room	23	Council Chamber &		Victoria Art Gallery	43			<b>Venues Overview</b>	<b>56</b>
Great Octagon	14	Terrace and				Brunswick Room	29	Assembly Rooms	44			<b>Capacities</b>	<b>60</b>
Card Room	15	Reception Hall	22					Roman Baths and				<b>We'd Love To Meet You</b>	<b>62</b>
Fashion Museum	15							Pump Room	45				
								Guildhall					



# BANQUETING ROOM & AIX-EN-PROVENCE ROOM

---

The Banqueting Room is a fine, well-proportioned room, with beautiful gilded decorative mouldings, original royal portraits and eighteenth century glittering chandeliers. The Guildhall's largest room was originally designed to host the city's dignitaries and has been frequented by royalty; most recently by HM Queen Elizabeth II who was entertained to lunch here in 2002.

With one of the most impressive Georgian interiors in Bath, the Banqueting Room is a splendid room for dinners and conferences. The adjoining Aix-en-Provence Room is perfect for drinks receptions or as a bar area.

Above: Banqueting Room

Right: Aix-en-Provence Room

28

With one of the most impressive Georgian interiors in Bath, the Banqueting Room is a splendid room for dinners and conferences. The adjoining Aix-en-Provence Room is perfect for drinks receptions or as a bar area.

Right: Aix-en-Provence Room



Lemontree Photography



Freia Turland

Freia Turland

The Brunswick Room was originally Bath's sessions court. It is conveniently located on the ground floor of the Guildhall and offers accessible and flexible space for meetings, presentations and drinks receptions.

Sandy Bledscoe, Lipscombe University.

Above: Brunswick Room

<b>Our Venues</b>	<b>4</b>	<b>Roman Baths</b>		Temple Pediment		<b>Guildhall</b>	<b>24</b>	<b>Victoria Art Gallery</b>	<b>30</b>	<b>Drinks And Dinners</b>	<b>40</b>	<b>Parties</b>	<b>46</b>	<b>Further Information</b>	<b>50</b>
<b>Assembly Rooms</b>	<b>8</b>	<b>and Pump Room</b>	<b>16</b>	and Aquae Sulis	23	Banqueting Room &				Roman Baths and		<b>Other Events</b>	<b>48</b>	<b>Catering</b>	<b>52</b>
Ball Room	12	Great Bath	20	Kingston and		Aix-En-Provence Room	28	<b>Conferences</b>		Pump Room	43			<b>Here To Help You</b>	<b>54</b>
Tea Room	13	Pump Room	21	drawing room	23	Council Chamber &		<b>and Meetings</b>	<b>34</b>	Victoria Art Gallery	43			<b>Venues Overview</b>	<b>56</b>
Great Octagon	14	Terrace and				Brunswick Room	29	Assembly Rooms	37	Assembly Rooms	44			<b>Capacities</b>	<b>60</b>
Card Room	15	Reception Hall	22					Roman Baths and		Guildhall	45			<b>We'd Love To Meet You</b>	<b>62</b>
Fashion Museum	15							Pump Room	38						
								Guildhall	39						



<b>Our Venues</b>	<b>4</b>	<b>Roman Baths</b>		Temple Pediment		<b>Guildhall</b>	<b>24</b>	<b>Victoria Art Gallery</b>	<b>30</b>	<b>Drinks And Dinners</b>	<b>40</b>	<b>Parties</b>	<b>46</b>	<b>Further Information</b>	<b>50</b>
<b>Assembly Rooms</b>	<b>8</b>	<b>and Pump Room</b>	<b>16</b>	and Aquae Sulis	23	Banqueting Room &				Roman Baths and		<b>Other Events</b>	<b>48</b>	<b>Catering</b>	<b>52</b>
Ball Room	12	Great Bath	20	Kingston and		Aix-En-Provence Room	28	<b>Conferences</b>		Pump Room	43			<b>Here To Help You</b>	<b>54</b>
Tea Room	13	Pump Room	21	drawing room	23	Council Chamber &		<b>and Meetings</b>	<b>34</b>	Victoria Art Gallery	43			<b>Venues Overview</b>	<b>56</b>
Great Octagon	14	Terrace and				Brunswick Room	29	Assembly Rooms	37	Assembly Rooms	44			<b>Capacities</b>	<b>60</b>
Card Room	15	Reception Hall	22					Roman Baths and		Guildhall	45			<b>We'd Love To Meet You</b>	<b>62</b>
Fashion Museum	15							Pump Room	38						
								Guildhall	39						



**VICTORIA ART GALLERY**

This lovely Grade II listed building was named to celebrate Queen Victoria's sixty years on the throne. Centrally situated, it houses a fine collection of paintings, sculpture, glassware and decorative arts, including works by Gainsborough, Sickert, Nash and Klee.

The building consists of the grand Upper Gallery and a more contemporary Lower Gallery, with an inviting marble entrance hall and grand staircase.

## THE UPPER GALLERY

The Upper Gallery displays works of art from the permanent collection and guests may be served drinks in the Rotunda, before proceeding into the beautifully displayed gallery to socialise.

## THE LOWER GALLERY

This gallery offers a varied and imaginative programme of touring and one off exhibitions. Massive sculptures can give way to delicate works on paper, contemporary murals or imposing floor to ceiling installations. We suggest viewing the current exhibition programme to see if there is a show that will suit the mood and atmosphere of your event. Depending on the exhibits on display, drinks can also be served in this area.



Far Left: main stairs

Left: exterior

Above: Upper Gallery

Right: Lower Gallery

<b>Our Venues</b>	<b>4</b>	<b>Roman Baths</b>		Temple Pediment		<b>Guildhall</b>	<b>24</b>	<b>Victoria Art Gallery</b>	<b>30</b>	<b>Drinks And Dinners</b>	<b>40</b>	<b>Parties</b>	<b>46</b>	<b>Further Information</b>	<b>50</b>
<b>Assembly Rooms</b>	<b>8</b>	<b>and Pump Room</b>	<b>16</b>	and Aquae Sulis	23	Banqueting Room &				Roman Baths and		<b>Other Events</b>	<b>48</b>	<b>Catering</b>	<b>52</b>
Ball Room	12	Great Bath	20	Kingston and		Aix-En-Provence Room	28	<b>Conferences</b>		Pump Room	43			<b>Here To Help You</b>	<b>54</b>
Tea Room	13	Pump Room	21	drawing room	23	Council Chamber &		<b>and Meetings</b>	<b>34</b>	Victoria Art Gallery	43			<b>Venues Overview</b>	<b>56</b>
Great Octagon	14	Terrace and				Brunswick Room	29	Assembly Rooms	37	Assembly Rooms	44			<b>Capacities</b>	<b>60</b>
Card Room	15	Reception Hall	22					Roman Baths and		Guildhall	45			<b>We'd Love To Meet You</b>	<b>62</b>
Fashion Museum	15							Pump Room	38						
								Guildhall	39						



A large, ornate hall with high ceilings and chandeliers, set up for a conference. The stage features a large screen displaying 'PETSEM Bath 2011' and a speaker at a podium. The audience is seated at long tables covered with white cloths, facing the stage. The room has classical architectural details like columns and a balcony.

<b>Our Venues</b>	<b>4</b>	<b>Roman Baths</b>			<b>Guildhall</b>	<b>24</b>	<b>Victoria Art Gallery</b>	<b>30</b>	<b>Drinks And Dinners</b>	<b>40</b>	<b>Parties</b>	<b>46</b>	<b>Further Information</b>	<b>50</b>
<b>Assembly Rooms</b>	<b>8</b>	<b>and Pump Room</b>	<b>16</b>	Temple Pediment							<b>Other Events</b>	<b>48</b>	<b>Catering</b>	<b>52</b>
				and Aquae Sulis	23	Banqueting Room &							<b>Here To Help You</b>	<b>54</b>
Ball Room	12	Great Bath	20	Kingston and		Aix-En-Provence Room	28	<b>Conferences</b>		Roman Baths and			<b>Venues Overview</b>	<b>56</b>
Tea Room	13	Pump Room	21	drawing room	23	Council Chamber &		<b>and Meetings</b>	<b>34</b>	Pump Room	43		<b>Capacities</b>	<b>60</b>
Great Octagon	14	Terrace and				Brunswick Room	29		37	Victoria Art Gallery	43		<b>We'd Love To Meet You</b>	<b>62</b>
Card Room	15	Reception Hall	22					Assembly Rooms		Assembly Rooms	44			
Fashion Museum	15							Roman Baths and		Guildhall	45			
								Pump Room	38					
								Guildhall	39					



# CONFERENCES AND MEETINGS

Bath is a prestigious backdrop for any conference, meeting or exhibition. Delegates are always keen to visit and our Grade I listed venues offer them a flavour of the city without even having to leave their conference room.

Below: Tea Room



<b>Our Venues</b>	<b>4</b>	<b>Roman Baths</b>	Temple Pediment	<b>Guildhall</b>	<b>24</b>	<b>Victoria Art Gallery</b>	<b>30</b>	<b>Drinks And Dinners</b>	<b>40</b>	<b>Parties</b>	<b>46</b>	<b>Further Information</b>	<b>50</b>
<b>Assembly Rooms</b>	<b>8</b>	<b>and Pump Room</b>	16	Banqueting Room &	23	<b>Conferences</b>		Roman Baths and		<b>Other Events</b>	<b>48</b>	<b>Catering</b>	<b>52</b>
Ball Room	12	Great Bath	20	Aix-En-Provence Room	28	<b>and Meetings</b>	<b>34</b>	Pump Room	43			<b>Here To Help You</b>	<b>54</b>
Tea Room	13	Pump Room	21	Council Chamber &	29	Assembly Rooms	37	Victoria Art Gallery	43			<b>Venues Overview</b>	<b>56</b>
Great Octagon	14	Terrace and		Brunswick Room		Roman Baths and		Assembly Rooms	44			<b>Capacities</b>	<b>60</b>
Card Room	15	Reception Hall	22			Pump Room	38	Guildhall	45			<b>We'd Love To Meet You</b>	<b>62</b>
Fashion Museum	15					Guildhall	39						

## THE ASSEMBLY ROOMS

The Assembly Rooms is Bath’s premier conference venue. Together with its stunning Georgian interior, it offers capacity for up to 500 delegates with space for catering and exhibitors. In addition, all the rooms have natural daylight, full blackout facilities and free Wi-Fi with a large bandwidth, making it easy to see why the venue is such a popular choice for conference organisers looking for a high quality conference in an historic setting.

With four interlinking rooms, the venue offers our clients a great deal of flexibility. The rooms may be hired individually for a smaller meeting or, for a larger conference; the whole venue may be used exclusively. We always suggest that you visit the Assembly Rooms when planning a conference to see how the versatile space can be best used to meet your requirements.

The Ball Room is a particularly impressive room for larger conferences and offers 360sq m of exhibition space. Up to 500 delegates may be accommodated in the Ball Room, with the Tea Room and the Great Octagon Room providing space for registration, refreshments and exhibitors.

As well as complimenting the Ball Room, the Tea Room is ideal for smaller conferences, offering space for up to 250 delegates in theatre style or 210sqm of exhibition space.

At the heart of the venue, and linking to the three other rooms, the Great Octagon Room is most frequently used for registration and catering during larger events. However, it works equally well as a meeting or syndicate room for up to 120 delegates. Additionally, the Card Room is available as a syndicate room, or as a refreshments area in conjunction with the Great Octagon Room.

As well as the four main rooms, a small room adjoins the Ball Room, suitable as a VIP or green room. An office is also available on site, ideal for use as a conference or production office or for storage.

Larger conferences requiring additional break-out space may also like to consider use of the Guildhall in conjunction with the Assembly Rooms.

### HAVE YOU THOUGHT ABOUT...

...using the Assembly Rooms for your main conference session and the Guildhall for additional syndicate rooms?

	THEATRE	CABARET	CLASSROOM	BOARDROOM
Ball Room	500	220	180	-
Tea Room	250	100	84	-
Octagon	120	80	-	30
Card Room	80	-	-	-



## CONFERENCES AND MEETINGS



# THE ROMAN BATHS & PUMP ROOM

Although the majority of the venue is only available for hire during the evening, there are two rooms available for meetings during the day at the Roman Baths and Pump Room.

The Kingston Room and Drawing Room are typically used together, with a small meeting in one, before delegates move into the adjacent room for lunch or refreshments. These twin rooms are often used for half day sessions, with delegates spending the afternoon visiting the Roman Baths or the nearby Thermae Bath Spa.

	THEATRE	BOARDROOM	CABARET	
Kingston Room	40	25	24	Above: Drawing Room
Drawing Room	40	25	24	Right: Kingston Room



# THE GUILDHALL



Conveniently located in the very heart of Bath, the Guildhall is ideal for medium-sized conferences or smaller meetings. It benefits from several syndicate rooms, and is just a five minute walk from the Bath Spa train station.

The sumptuously decorated Banqueting Room can accommodate up to 360 delegates and included with the hire of the room is the adjoining Aix-en-Provence Room. This room is suitable for serving refreshments, registration, or as a break out space for up to 60 people.

On the ground floor, the Brunswick Room is well suited to presentations and meetings. Upstairs, there are two other rooms available for meetings which may be hired individually or in conjunction with other rooms when holding a larger event. The Council Chamber has fixed seating and is equipped with desks and microphones making it ideal for a seminar or formal debate. The Kaposvar Room seats 50 people theatre style.

	THEATRE	CABARET	CLASSROOM	
	Banqueting Room	360	220	120
Top: Brunswick Room	Brunswick Room	120	40	40
Above: Aix en Provence	Council Chamber	Fixed seating for 120		
	Kaposvar	50	-	-

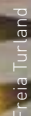
<b>Our Venues</b>	<b>4</b>	<b>Roman Baths</b>		Temple Pediment		<b>Guildhall</b>	<b>24</b>	<b>Victoria Art Gallery</b>	<b>30</b>	<b>Drinks And Dinners</b>	<b>40</b>	<b>Parties</b>	<b>46</b>	<b>Further Information</b>	<b>50</b>
<b>Assembly Rooms</b>	<b>8</b>	<b>and Pump Room</b>	<b>16</b>	and Aquae Sulis	23	Banqueting Room &		<b>Conferences</b>		Roman Baths and		<b>Other Events</b>	<b>48</b>	<b>Catering</b>	<b>52</b>
Ball Room	12	Great Bath	20	Kingston and		Aix-En-Provence Room	28	<b>and Meetings</b>	<b>34</b>	Pump Room	43			<b>Here To Help You</b>	<b>54</b>
Tea Room	13	Pump Room	21	drawing room	23	Council Chamber &		Assembly Rooms	37	Victoria Art Gallery	43			<b>Venues Overview</b>	<b>56</b>
Great Octagon	14	Terrace and				Brunswick Room	29	Roman Baths and		Assembly Rooms	44			<b>Capacities</b>	<b>60</b>
Card Room	15	Reception Hall	22					Pump Room	38	Guildhall	45			<b>We'd Love To Meet You</b>	<b>62</b>
Fashion Museum	15							Guildhall	39						



<b>Our Venues</b>	<b>4</b>	<b>Roman Baths</b>	Temple Pediment	<b>Guildhall</b>	<b>24</b>	<b>Victoria Art Gallery</b>	<b>30</b>	<b>Drinks And Dinners</b>	<b>40</b>	<b>Parties</b>	<b>46</b>	<b>Further Information</b>	<b>50</b>
<b>Assembly Rooms</b>	<b>8</b>	<b>and Pump Room</b>	16	and Aquae Sulis	23	Banqueting Room &		Roman Baths and		<b>Other Events</b>	<b>48</b>	<b>Catering</b>	<b>52</b>
Ball Room	12	Great Bath	20	Kingston and		Aix-En-Provence Room	28	Pump Room	43			<b>Here To Help You</b>	<b>54</b>
Tea Room	13	Pump Room	21	drawing room	23	Council Chamber &		Victoria Art Gallery	43			<b>Venues Overview</b>	<b>56</b>
Great Octagon	14	Terrace and				Brunswick Room	29	Assembly Rooms	44			<b>Capacities</b>	<b>60</b>
Card Room	15	Reception Hall	22					Roman Baths and				<b>We'd Love To Meet You</b>	<b>62</b>
Fashion Museum	15							Pump Room	45				
								Guildhall					



Originally designed for hospitality and entertainment, Bath's Historic Venues today offer unique and atmospheric settings for drinks receptions and dinners. Whether you are planning an intimate supper for family and friends or a gala dinner for colleagues, any occasion becomes a memorable one at these beautiful venues.



At the heart of the World Heritage Site, the Roman Baths are undoubtedly one of the most original locations in the country for a drinks reception. Your guests may mingle beside the torch-lit and steaming waters, walking on paving dating back nearly two thousand years, guaranteeing an unforgettable evening. Although the Great Bath can accommodate up to 320 guests, the nature of the venue means it is equally suitable for very small groups.

Following drinks beside the Great Bath, guests may move upstairs to the elegant Pump Room for dinner, or alternatively to the Terrace and Reception Hall. The Pump Room is the perfect partner to the Roman Baths. This exceptional room is ideally suited to banquets, conference dinners, and large family gatherings, with capacity for up to 200 guests. The Steinway piano may be used should you wish to provide some entertainment during your dinner, and also available is a discreet built in PA system for speeches.

With its spectacular view over the Great Bath, the Terrace is a more intimate alternative to the Pump Room. The Terrace can accommodate up to 80 guests for formal dining, but is frequently used for much smaller numbers and is especially popular with incentive or VIP groups. Combining the Terrace with the adjoining Reception Hall allows 70 extra guests to be seated for dinner. The Reception Hall also provides additional space for dancing or a bar.

For larger parties or where different entertainment zones are required it is possible to hire the whole Pump Room complex.

The evocative Aquae Sulis area of the museum is the perfect choice for small but very special dinners. You can dine with the backdrop of the waters from the spring overflow, amongst the museum artifacts. The area is also available for a drinks reception.

These spaces are all available to hire daily from September to June from 7pm except for the Pump Room, which can be hired from 8pm all year round. During July and August (when the Roman Baths are unavailable for pre-dinner drinks) you might like to partner the Pump Room with the Victoria Art Gallery, which is just a short walk away.

## HAVE YOU THOUGHT ABOUT...

...entertaining your guests  
with costumed Roman  
characters?

	DRINKS RECEPTION	DINNER	DINNER DANCE / SEATED BUFFET
	Roman Baths	320	-
	Pump Room	300	200
Opposite above: Pump Room	Terrace	120	80
	Reception Hall	150	70
Opposite below: Terrace	Aquae Sulis	100	20



# THE VICTORIA ART GALLERY

The Victoria Art Gallery is a particularly inspiring venue for drinks and canapé receptions. It may be used in conjunction with the Guildhall, which is located next door, or with the Pump Room which is a short stroll away.

The Upper and Lower Galleries are available for hire Tuesday to Saturday from 6pm or all day on a Monday.  
(Clear drinks only in the Upper Gallery.)

## DRINKS RECEPTION

Upper Gallery	<b>100</b>
Lower Gallery	<b>150*</b>

\*capacity dependant on current exhibition

**Above:** Upper Gallery

<b>Our Venues</b>	<b>4</b>	<b>Roman Baths</b>		Temple Pediment		<b>Guildhall</b>	<b>24</b>	<b>Victoria Art Gallery</b>	<b>30</b>	<b>Drinks And Dinners</b>	<b>40</b>	<b>Parties</b>	<b>46</b>	<b>Further Information</b>	<b>50</b>
<b>Assembly Rooms</b>	<b>8</b>	<b>and Pump Room</b>	<b>16</b>	and Aquae Sulis	23	Banqueting Room &		<b>Conferences</b>		Roman Baths and		<b>Other Events</b>	<b>48</b>	<b>Catering</b>	<b>52</b>
Ball Room	12	Great Bath	20	Kingston and		Aix-En-Provence Room	28	<b>and Meetings</b>	<b>34</b>	Pump Room	43			<b>Here To Help You</b>	<b>54</b>
Tea Room	13	Pump Room	21	drawing room	23	Council Chamber &		Assembly Rooms	37	Victoria Art Gallery	43			<b>Venues Overview</b>	<b>56</b>
Great Octagon	14	Terrace and				Brunswick Room	29	Roman Baths and		Assembly Rooms	44			<b>Capacities</b>	<b>60</b>
Card Room	15	Reception Hall	22					Pump Room	38	Guildhall	45			<b>We'd Love To Meet You</b>	<b>62</b>
Fashion Museum	15							Guildhall	39						



DRINKS AND DINNERS



Freia Turland

THE ASSEMBLY ROOMS

One of Bath’s finest Georgian buildings, the Assembly Rooms is still central to the city’s social life. The venue exudes a simple elegance, and with its sparkling Whitefriars crystal chandeliers dimmed it needs very little dressing to provide a dramatic backdrop for dinner or drinks. Using a combination of rooms, this stunning venue can accommodate up to 420 people for dinner.

The Ball Room, seating up to 280 people in cabaret style, lends itself perfectly to awards ceremonies and gala dinners. The elegant Tea Room is available for dinners of up to 170 guests, but may also be used for larger drinks receptions.

At the heart of the venue, the Great Octagon is perfect for pre-dinner drinks in the adjoining Ball Room or Tea Room. It may also be used for smaller dinners or lunches.



Freia Turland

Beyond the Great Octagon is the Card Room, available free of charge as a convenient bar area when the Ball Room or Tea Room are hired for catered events. The Card Room also has access to a small Georgian garden, so that you can enjoy drinks outside on a balmy evening.

On the lower ground floor, the Fashion Museum is available to hire from 6.30pm. With its renowned collection of fashionable dress it makes an inspiring venue for a drinks reception.

Above left: Tea Room  
Above: Ball Room

	DRINKS RECEPTION	DINNER	DINNER DANCE / SEATED BUFFET
Ball Room	400	310	280
Tea Room	300	170	120
Octagon	250	120	-
Fashion Museum	100	-	-
Card Room	100	-	-



Thomas Sultana

THE GUILDHALL

Left below: Banqueting Room

With a convenient city centre location, a large capacity for dining and as home to the modern Council, the Guildhall remains a building central to civic hospitality.

The Banqueting Room offers a grand setting, with its sumptuous interior, reputed to be the finest in Bath, for up to 200 guests for dinner. The adjoining Aix-en-Provence room is the perfect location for arrival drinks. It may also be used a bar area or as a buffet service point.

For drinks receptions, the Brunswick Room can accommodate 130 guests. It is frequently used for pre-concert receptions for events taking place either upstairs in the Banqueting Room or in the nearby Bath Abbey.

“ I WOULD LIKE TO DEEPLY THANK YOU AND YOUR COLLEAGUES FOR HELPING US ORGANISE SUCH AN AMAZING EVENT. EVERYONE HAD A WONDERFUL TIME AND LOVED THE FOOD AND ATMOSPHERE.”

University of Bath, Model United Nations society.

	DRINKS RECEPTION	DINNER	DINNER DANCE / SEATED BUFFET
Banqueting Room	250	200	180
Brunswick Room	130	-	-

Our Venues	4	Roman Baths	16	Temple Pediment		Guildhall	24	Victoria Art Gallery	30	Drinks And Dinners	40	Parties	46	Further Information	50
Assembly Rooms	8	and Pump Room		and Aquae Sulis		Banqueting Room &		Conferences		Roman Baths and		Other Events	48	Catering	52
Ball Room	12	Great Bath	20	Kingston and	23	Aix-En-Provence Room	28	and Meetings	34	Pump Room	43			Here To Help You	54
Tea Room	13	Pump Room	21	drawing room	23	Council Chamber &		Assembly Rooms	37	Victoria Art Gallery	43			Venues Overview	56
Great Octagon	14	Terrace and				Brunswick Room	29	Roman Baths and		Assembly Rooms	44			Capacities	60
Card Room	15	Reception Hall	22					Pump Room	38	Guildhall	45			We'd Love To Meet You	62
Fashion Museum	15							Guildhall	39						



You are spoilt for choice when it comes to choosing a venue for your celebration; we have spaces available for lunches, afternoon teas or evening parties.

Lee Neil



If you are looking for an original venue for a party, the Terrace and Reception Hall is an excellent option. The area is ideal for buffets and bowl food receptions, or you may prefer to start the evening with a more formal dinner. Alternatively, space can be left for dancing in the Pump Room, and once guests have finished dinner they can enjoy live music from the stage that is in situ.

The Kingston Room and Drawing Room are ideal for a more modest celebration. Up to 40 guests can arrive and enjoy a drink in the Drawing Room then move to the Kingston Room for a celebratory lunch or private afternoon tea.

Built for entertainment, the Assembly Rooms is still a perfect party location. Up to 280 guests may enjoy a dinner or buffet in the magnificent Ball Room, leaving space to make use of the sprung wooden floor designed for dancing. The Tea Room can accommodate 120 guests for dinner and dancing, or hire all rooms in the venue and you have space for up to 420 people.

The Guildhall is one of the largest venues in Bath where you are free to use your own choice of caterer, perfect if you are planning a themed event. Up to 180 guests may enjoy dinner and dancing in the Banqueting Room. The adjoining Aix-en-Provence Room is ideal as a buffet service point, as well as a bar area.



<b>Our Venues</b>	<b>4</b>	<b>Roman Baths</b>		Temple Pediment		<b>Guildhall</b>	<b>24</b>	<b>Victoria Art Gallery</b>	<b>30</b>	<b>Drinks And Dinners</b>	<b>40</b>	<b>Parties</b>	<b>46</b>	<b>Further Information</b>	<b>50</b>
<b>Assembly Rooms</b>	<b>8</b>	<b>and Pump Room</b>	<b>16</b>	and Aquae Sulis	23	Banqueting Room &				Roman Baths and		<b>Other Events</b>	<b>48</b>	<b>Catering</b>	<b>52</b>
Ball Room	12	Great Bath	20	Kingston and		Aix-En-Provence Room	28	<b>Conferences</b>		Pump Room	43			<b>Here To Help You</b>	<b>54</b>
Tea Room	13	Pump Room	21	drawing room	23	Council Chamber &		<b>and Meetings</b>	<b>34</b>	Victoria Art Gallery	43			<b>Venues Overview</b>	<b>56</b>
Great Octagon	14	Terrace and				Brunswick Room	29	Assembly Rooms	37	Assembly Rooms	44			<b>Capacities</b>	<b>60</b>
Card Room	15	Reception Hall	22					Roman Baths and		Guildhall	45			<b>We'd Love To Meet You</b>	<b>62</b>
Fashion Museum	15							Pump Room	38						
								Guildhall	39						



# OTHER EVENTS

A wide-angle photograph of a large audience seated in a grand hall, likely a theater or concert hall. The audience is facing a stage area where a large screen displays a blue circular logo. The hall features ornate architecture, including a large chandelier hanging from the ceiling and a balcony with columns. The floor is decorated with large white circles on a dark surface. The text "OTHER EVENTS" is overlaid in large white letters on the left side of the image.

## 48

Julian Foxton

Colin Hawkins



<b>Our Venues</b>	<b>4</b>	<b>Roman Baths</b>		Temple Pediment		<b>Guildhall</b>	<b>24</b>	<b>Victoria Art Gallery</b>	<b>30</b>	<b>Drinks And Dinners</b>	<b>40</b>	<b>Parties</b>	<b>46</b>	<b>Further Information</b>	<b>50</b>
<b>Assembly Rooms</b>	<b>8</b>	<b>and Pump Room</b>	<b>16</b>	and Aquae Sulis	23	Banqueting Room &				Roman Baths and		<b>Other Events</b>	<b>48</b>	<b>Catering</b>	<b>52</b>
Ball Room	12	Great Bath	20	Kingston and		Aix-En-Provence Room	28	<b>Conferences</b>		Pump Room	43			<b>Here To Help You</b>	<b>54</b>
Tea Room	13	Pump Room	21	drawing room	23	Council Chamber &		<b>and Meetings</b>	<b>34</b>	Victoria Art Gallery	43			<b>Venues Overview</b>	<b>56</b>
Great Octagon	14	Terrace and				Brunswick Room	29	Assembly Rooms	37	Assembly Rooms	44			<b>Capacities</b>	<b>60</b>
Card Room	15	Reception Hall	22					Roman Baths and		Guildhall	45			<b>We'd Love To Meet You</b>	<b>62</b>
Fashion Museum	15							Pump Room	38						
								Guildhall	39						



# FURTHER INFORMATION

<b>Our Venues</b>	<b>4</b>	<b>Roman Baths and Pump Room</b>	<b>16</b>	Temple Pediment and Aquae Sulis	23	<b>Guildhall</b>	<b>24</b>	<b>Victoria Art Gallery</b>	<b>30</b>	<b>Drinks And Dinners</b>	<b>40</b>	<b>Parties Other Events</b>	<b>46</b>	<b>Further Information</b>	<b>50</b>
<b>Assembly Rooms</b>	<b>8</b>					Banqueting Room & Aix-En-Provence Room	28	<b>Conferences and Meetings</b>	<b>34</b>	Roman Baths and Pump Room	43		<b>48</b>	<b>Catering</b>	<b>52</b>
Ball Room	12	Great Bath	20	Kingston and drawing room	23	Council Chamber & Brunswick Room	29	Assembly Rooms	37	Victoria Art Gallery	43			<b>Here To Help You</b>	<b>54</b>
Tea Room	13	Pump Room	21					Roman Baths and Pump Room	38	Assembly Rooms	44			<b>Venues Overview</b>	<b>56</b>
Great Octagon	14	Terrace and Reception Hall	22					Guildhall	39	Guildhall	45			<b>Capacities</b>	<b>60</b>
Card Room	15													<b>We'd Love To Meet You</b>	<b>62</b>
Fashion Museum	15														





At the Guildhall and the Victoria Art Gallery we operate a listed caterer scheme, where you may choose from a selection of catering companies. All caterers on our list are familiar with the venue and its kitchen, and have been endorsed by previous clients. Alternatively, and unusually for such an esteemed venue, you are also free to use a caterer of your choice who meets our terms and conditions. Further information can be found on our website [www.bathvenues.co.uk](http://www.bathvenues.co.uk) or please speak to a member of the team.

<b>Our Venues</b>	<b>4</b>	<b>Roman Baths</b>		Temple Pediment		<b>Guildhall</b>	<b>24</b>	<b>Victoria Art Gallery</b>	<b>30</b>	<b>Drinks And Dinners</b>	<b>40</b>	<b>Parties</b>	<b>46</b>	<b>Further Information</b>	<b>50</b>
<b>Assembly Rooms</b>	<b>8</b>	<b>and Pump Room</b>	<b>16</b>	and Aquae Sulis	23	Banqueting Room &				Roman Baths and		<b>Other Events</b>	<b>48</b>	<b>Catering</b>	<b>52</b>
Ball Room	12	Great Bath	20	Kingston and		Aix-En-Provence Room	28	<b>Conferences</b>		Pump Room	43			<b>Here To Help You</b>	<b>54</b>
Tea Room	13	Pump Room	21	drawing room	23	Council Chamber &		<b>and Meetings</b>	<b>34</b>	Victoria Art Gallery	43			<b>Venues Overview</b>	<b>56</b>
Great Octagon	14	Terrace and				Brunswick Room	29	Assembly Rooms	37	Assembly Rooms	44			<b>Capacities</b>	<b>60</b>
Card Room	15	Reception Hall	22					Roman Baths and		Guildhall	45			<b>We'd Love To Meet You</b>	<b>62</b>
Fashion Museum	15							Pump Room	38						
								Guildhall	39						



# HERE TO HELP YOU

With extensive experience of holding and organising events, we offer hands-on professional and practical expertise. We will guide you through the planning of your event to help ensure that on the day everything is exactly as you envisaged.

In the time leading up to your event we will work closely with you and your suppliers to ensure that nothing is left to chance. We generally suggest that you come in to meet with us four weeks prior to your event to finalise the details. However, we are also happy to answer any queries that you may have before this either in person, over the telephone or via email. Working with you, we will produce an event schedule listing your timings and requirements, and if applicable room layouts. We can also provide a certain amount of equipment free of charge; please see **page 59** for more information.

On the day of your event, we will ensure that our venues are welcoming, well-presented and set out to the specification you have agreed with us. A designated Event Manager, operations staff and up to two security personnel are provided to ensure that everything runs smoothly and seamlessly.

We are passionate about the buildings we look after, and feedback from our clients frequently praises the enthusiasm and professionalism of our staff. From the day you decide to use our venues, you can be assured that the whole team will be working closely together to make sure your event is a success.

## SPECIAL OFFERS

Late availability discounts, packages and other seasonal offers can be found advertised on our website.

## SUPPLIERS

We have a flexible approach towards suppliers, and at all our venues you are free to make your own choices. We can liaise directly with your suppliers regarding access, preparation and deliveries, leaving you with one less thing to think about.

Our website, [www.bathvenues.co.uk](http://www.bathvenues.co.uk), lists a whole host of suppliers familiar with our venues, so if you are looking for some entertainment, a florist or even an audio-visual company, it is a good place to find some inspiration. If you are looking for something specific or need further advice, our team are happy to suggest suitable options wherever we can.

The only exception is your choice of caterer at the Assembly Rooms and Pump Room, where you are required to use our caterer Searcys. At the Guildhall we operate a listed caterers’ scheme, but subject to terms and conditions you are also able to use another professional caterer at the venue.

## GUIDED TOURS AND COSTUMED CHARACTERS

We can arrange guided tours of the Roman Baths, Victoria Art Gallery and Fashion Museum for you and your guests. At the Roman Baths, we can arrange for costumed characters to entertain you – a Roman Soldier with tales of his journey from Rome, or a local stonemason at work.

If you are having an event at the Roman Baths we can arrange guided tours of the museum for groups of up to 100 people. We can also arrange tours of the Fashion Museum and Victoria Art Gallery.

## PROMOTIONAL ASSISTANCE

If you are planning a ticketed or public event, we can include it on our monthly newsletter, tweet about it, and include it on our Facebook page. Just ask the team for more information.

The local ticket agency, Bath Box Office, can help you with ticket sales and marketing. Please visit [www.bathboxoffice.org.uk](http://www.bathboxoffice.org.uk).

## ACCOMMODATION

Bath offers a wealth of accommodation options. For access to over 250 providers, from the finest to the more affordable please visit [www.visitbath.co.uk/accommodation](http://www.visitbath.co.uk/accommodation). All the options on this site are part of a nationally recognised brand, have been inspected by Visit Britain or the AA, or are VisitBath Approved.

## PARKING

Park and ride facilities and public car parks can be found a short walk from all our venues.

Long stay parking is available at Charlotte Street, Avon Street and Southgate. Alternatively Park & Ride facilities are available to the North, East and South of the city (but do not operate every Sunday). For more information visit: [www.bathnes.gov.uk/services/parking-and-travel](http://www.bathnes.gov.uk/services/parking-and-travel)

## DELIVERIES AND UNLOADING

For advice about deliveries and unloading, please speak to our team on 01225 477786.

To locate the venues, please use the following postcodes:

Pump Room & Roman Baths, BA1 1LZ  
Assembly Rooms, BA1 2QH  
Guildhall, BA1 5AW  
Victoria Art Gallery, BA2 4AT

## AVAILABILITY

With the exception of the Guildhall, Bath’s Historic Venues are working visitor attractions and as such, there may be restrictions in place at certain times of the day and during the year. Thank you for your patience and understanding.

### Assembly Rooms

The Assembly Rooms are available to hire at any time of the day all year round.

The Card Room is available free of charge as a bar area when the Tea Room or Ball Room are hired for catered events. It is not available for hire on its own.

### Roman Baths & Pump Room

The Roman Baths, Terrace, Reception Hall, Temple Pediment and Aquae Sulis are only available to hire when the museum is closed: before 9am and from 7pm daily. Aquae Sulis and the Temple Pediment are not available to hire when there is an event taking place on the Terrace. Please ask the team for more information.

During July and August, the museum is open late to visitors so these rooms are not available to hire in the evening. The Pump Room is still available for private hire from 8pm all year round and you may choose to have a drinks reception in the Victoria Art Gallery prior to this.

The Kingston and Drawing Rooms are available to hire at any time of the day all year round. They are not usually available for hire on their own after 7pm.

### Guildhall

The Guildhall is available to hire at any time of the day all year round. The Aix-en-Provence Room is not usually available for hire on its own.

### Victoria Art Gallery

The Gallery can be privately hired from 6pm Tuesday to Sunday and at any time on Monday.

Due to the value of certain paintings, only clear drinks are permitted in the Upper Gallery. Depending on the nature of the exhibition in the Lower Gallery, restrictions may apply, please ask for details.

“  
FABULOUS!! EVERYONE HAD SUCH A GOOD TIME! I COULDN’T HAVE DONE IT WITHOUT ALL YOUR HELP AND ADVICE!”

Marlene Anning, Emergency UK

<b>Our Venues</b>	<b>4</b>	<b>Roman Baths</b>		Temple Pediment	
<b>Assembly Rooms</b>	<b>8</b>	<b>and Pump Room</b>	<b>16</b>	and Aquae Sulis	
Ball Room	12	Great Bath	20	Kingston and	23
Tea Room	13	Pump Room	21	drawing room	23
Great Octagon	14	Terrace and			
Card Room	15	Reception Hall	22		
Fashion Museum	15				

<b>Guildhall</b>	<b>24</b>
Banqueting Room &	
Aix-En-Provence Room	28
Council Chamber &	
Brunswick Room	29

<b>Victoria Art Gallery</b>	<b>30</b>
<b>Conferences and Meetings</b>	<b>34</b>
Assembly Rooms	37
Roman Baths and	
Pump Room	38
Guildhall	39

<b>Drinks And Dinners</b>	<b>40</b>
Roman Baths and	
Pump Room	43
Victoria Art Gallery	43
Assembly Rooms	44
Guildhall	45

<b>Parties Other Events</b>	<b>46</b>
	<b>48</b>
<b>Further Information</b>	<b>50</b>
<b>Catering</b>	<b>52</b>
<b>Here To Help You</b>	<b>54</b>
<b>Venues Overview</b>	<b>56</b>
<b>Capacities</b>	<b>60</b>
<b>We’d Love To Meet You</b>	<b>62</b>



# VENUES OVERVIEW



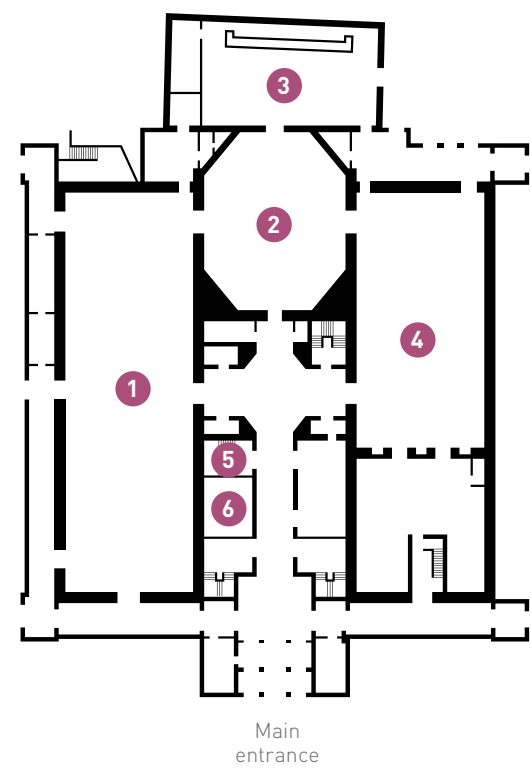
BALL ROOM	TEA ROOM	GREAT OCTAGON	CARD ROOM	ROMAN BATHS	PUMP ROOM	TERRACE
Capacity	Capacity	Capacity	Capacity	Capacity	Capacity	Capacity
500 theatre style	250 theatre style	250 drinks reception	80 theatre style	320 drinks reception	200 dinner	80 dinner
310 dinner	170 dinner	120 theatre style	Great bar area, ideal for refreshments. Available all day, all year round	Great for drinks receptions Available from 7pm, September – June.	300 drinks reception	120 drinks reception
Great for conferences, awards dinners and parties. Available all day, all year round	Great for parties, meetings and exhibition space. Available all day, all year round	Great for drinks receptions, registration or exhibitions. Available all day, all year round	Ground floor, level access.	Uneven surface, access available via stairs or lift	Great for gala dinners and parties. Available from 8pm.	Great for intimate dinners Available from 7pm
Ground floor, level access.	Ground floor, level access.	Ground floor, level access.			Ground floor, level access	Ground floor, level access.



RECEPTION HALL	KINGSTON ROOM & DRAWING ROOM	BANQUETING ROOM & AIX- EN-PROVENCE	BRUNSWICK ROOM	COUNCIL CHAMBER	UPPER GALLERY	LOWER GALLERY
Capacity	Capacity	Capacity	Capacity	Capacity	Capacity	Capacity
150 drinks reception	40 theatre style	360 theatre style	120 theatre style	120 (fixed seating)	100 drinks reception	150 drinks reception*
Great for parties and dancing. Available from 7pm	40 dinner	200 dinner	130 drinks reception	Great for meetings and debates. Available all day, all year round	Great for drinks receptions. Available from 6pm	Great for drinks receptions. Available from 6pm
Ground floor, level access.	Great for small meetings, lunches, or afternoon tea Available all day, all year round	Great for large dinners, parties and meetings. Available all day, all year	Great for meetings. Available all day, all year round	First floor, access via stairs or lift	First floor, access via stairs or lift	Ground floor, level access.
	Ground floor, level access.	Choice of caterers. First floor, access via stairs or lift	Choice of caterers, cold food only. Ground floor, level access.			*Depending on nature of exhibition

<b>Our Venues</b>	<b>4</b>	<b>Roman Baths</b>		Temple Pediment		<b>Guildhall</b>	<b>24</b>	<b>Victoria Art Gallery</b>	<b>30</b>	<b>Drinks And Dinners</b>	<b>40</b>	<b>Parties</b>	<b>46</b>	<b>Further Information</b>	<b>50</b>
<b>Assembly Rooms</b>	<b>8</b>	<b>and Pump Room</b>	<b>16</b>	and Aquae Sulis	23	Banqueting Room &	28	<b>Conferences</b>	<b>34</b>	Roman Baths and	43	<b>Other Events</b>	<b>48</b>	<b>Catering</b>	<b>52</b>
Ball Room	12	Great Bath	20	Kingston and	23	Aix-En-Provence Room	28	<b>and Meetings</b>	<b>37</b>	Pump Room	43			<b>Here To Help You</b>	<b>54</b>
Tea Room	13	Pump Room	21	drawing room		Council Chamber &	29	Assembly Rooms		Victoria Art Gallery	43			<b>Venues Overview</b>	<b>56</b>
Great Octagon	14	Terrace and				Brunswick Room		Roman Baths and		Assembly Rooms	44			<b>Capacities</b>	<b>60</b>
Card Room	15	Reception Hall	22					Pump Room	38	Guildhall	45			<b>We'd Love To Meet You</b>	<b>62</b>
Fashion Museum	15							Guildhall	39						





Abbey Church Yard entrance

Stall Street entrance

Main entrance

GENERAL INFORMATION

- Tables, chairs, staging and flipcharts are included in our room hire charges. We can provide you with sample room layouts to help you with your planning.
- All chandeliers are at a fixed height and cannot be moved up or down. They may all be dimmed.
- All meeting rooms have natural daylight and blackout blinds.
- Three-phase power is available in the Ball Room at the Assembly Rooms.

AUDIO- VISUAL EQUIPMENT

At all of the venues we are able to provide you with a PA system and speakers at no additional cost. The equipment we have available is suitable for speeches at small to medium sized events. For larger events, or where the specification is more complex, we suggest using an external supplier.

You are welcome to use your own choice of supplier to provide audio-visual equipment. Alternatively, we would be delighted to arrange a bespoke quote for equipment or a technician.

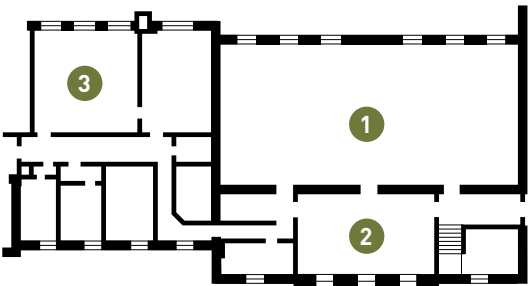
The Roman Baths, Pump Room, Terrace and Upper Gallery have PA systems in situ; freestanding equipment is available for other rooms.

We have LCD projectors and screens available for use at all the venues.

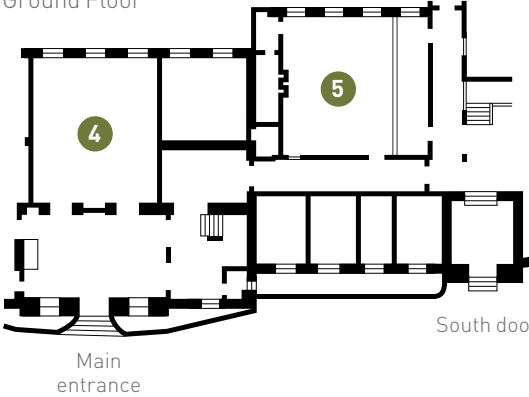
WI-FI

Wi-Fi is available at the Assembly Rooms, the Roman Baths & Pump Room, and the Guildhall. At the Assembly Rooms the Wi-Fi is high speed and high capacity, ideal for large conferences. Please speak to the team for more information.

First Floor



Ground Floor



- 1 Ball Room
- 2 Great Octagon
- 3 Card Room
- 4 Tea Room
- 5 Exit from Fashion Museum
- 6 Event Office

- 1 Terrace and Reception Hall
- 2 Drawing Room
- 3 Kingston Room
- 4 Great Bath
- 5 Pump Room

- 1 Banqueting Room
- 2 Aix-en-Provence Room
- 3 Kaposvar Room
- 4 Brunswick Room
- 5 Bath Register Office

ADDITIONAL SERVICES

The following services are available subject to additional charges:

- Staffed cloakroom
- Guided tours and costumed characters
- Piano tuning
- Additional security staff (depending on the nature and size of your event)
- Audio-visual equipment
- An AV technician

At all of the venues we are able to provide you with a PA system and speakers at no additional cost, including wireless and lapel mics.

If you would like further advice or a bespoke quote, please just ask.



THE SERVICE WAS ABSOLUTELY IMPECCABLE AND WE REALLY APPRECIATED HAVING SUCH A DEDICATED AND PROFESSIONAL TEAM ON HAND TO ACCOMMODATE OUR EVERY NEED."

Amanda Crowfoot, Science Europe

<b>Our Venues</b>	<b>4</b>	<b>Roman Baths and Pump Room</b>	<b>16</b>	Temple Pediment and Aquae Sulis	23	<b>Guildhall</b>	<b>24</b>
<b>Assembly Rooms</b>	<b>8</b>	Great Bath	20	Kingston and drawing room	23	Banqueting Room & Aix-En-Provence Room	28
Ball Room	12	Pump Room	21			Council Chamber & Brunswick Room	29
Tea Room	13	Terrace and Reception Hall	22				
Great Octagon	14						
Card Room	15						
Fashion Museum	15						
<b>Victoria Art Gallery</b>	<b>30</b>	<b>Drinks And Dinners</b>	<b>40</b>	<b>Parties Other Events</b>	<b>46</b>	<b>Further Information</b>	<b>50</b>
<b>Conferences and Meetings</b>	<b>34</b>	Roman Baths and Pump Room	43		48	<b>Catering</b>	<b>52</b>
Assembly Rooms	37	Victoria Art Gallery	43			<b>Here To Help You</b>	<b>54</b>
Roman Baths and Pump Room	38	Assembly Rooms	44			<b>Venues Overview</b>	<b>56</b>
Guildhall	39	Guildhall	45			<b>Capacities</b>	<b>60</b>
						<b>We'd Love To Meet You</b>	<b>62</b>



# CAPACITIES

## ROOM CAPACITIES AND GENERAL INFORMATION

PUMP ROOM COMPLEX	DINNER	DINNER DANCE	CABARET	DRINKS RECEPTION
Pump Room	180	160	-	300
Reception Hall	70	50	-	150
Terrace	80	-	-	120
Drawing Room	40	-	-	50
Kingston Room	40	-	-	50
Roman Baths	-	-	-	320
Aquae Sulis and Temple Pediment	20	-	-	40

ASSEMBLY ROOMS	DINNER	DINNER DANCE	CABARET	DRINKS RECEPTION
Ball Room	310	280	220	400
Tea Room	170	120	100	300
Great Octagon	120	-	80	250
Card Room	60	-	-	100
Fashion Museum	-	-	-	150
Event Office	-	-	6	-

GUILDHALL	DINNER	DINNER DANCE	CABARET	DRINKS RECEPTION
Banqueting Room	200	180	120	250
Aix-en-Provence Room	50	-	-	70
Brunswick Room	-	-	70	130
Kapsovar Room	-	-	-	80
Council Chamber	-	-	-	-

VICTORIA ART GALLERY	DINNER	DINNER DANCE	CABARET	DRINKS RECEPTION
Upper Gallery	-	-	-	100
Lower Gallery	-	-	-	150 *

THEATRE	CLASSROOM	BOARDROOM	SIZE IN METRES	SIZE IN FEET	EXHIBITION SPACE	BLACKOUT AVAILABLE
300	-	-	17.5 x 12.6	57 x 41	-	YES
80	-	-	18 x 13.6	56 x 44 ½	-	NO
100	-	-	25.5 x 3.3	83 x 11	-	NO
40	-	25	8.5 x 5	28 x 16½	-	YES
40	-	25	8.5 x 5	28 x 16½	-	YES
-	-	-	-	-	-	NO
-	-	-	-	-	-	NO

THEATRE	CLASSROOM	BOARDROOM	SIZE IN METRES	SIZE IN FEET	EXHIBITION SPACE	BLACKOUT AVAILABLE
500	180	-	30 x 12	100 x 40	360sqm	YES
250	84	-	17.5 x 12	58 x 40	210sqm	YES
120	-	-	14 x 14	47 x 47	-	YES
80	-	-	18 x 5.5	59 x 18	-	NO
-	-	-	-	-	-	YES
15	-	12	-	-	-	-

THEATRE	CLASSROOM	BOARDROOM	SIZE IN METRES	SIZE IN FEET	EXHIBITION SPACE	BLACKOUT AVAILABLE
360	120	-	24.3 x 12.2	79 x 40	296sqm	YES
60	-	30	11.2 x 6.4	37 x 21	-	YES
120	60	40	12 x 9.8	39 x 32	117sqm	YES
50	-	25	8.9 x 8.7	29 x 28½	-	YES
100 (fixed seating)	-	-	-	-	-	YES

THEATRE	CLASSROOM	BOARDROOM	SIZE IN METRES	SIZE IN FEET	EXHIBITION SPACE	BLACKOUT AVAILABLE
50	-	-	26.8 x 9.4	88 x 31	-	NO
-	-	-	20.7 x 8.2	68 x 27	-	NO

\*The capacity in the Lower Gallery depends on the current exhibition.

All numbers are based on front projection where applicable, where rear projection is required numbers will be reduced.

Our Venues	4	Roman Baths		Temple Pediment		Guildhall	24	Victoria Art Gallery	30	Drinks And Dinners	40	Parties	46	Further Information	50
Assembly Rooms	8	and Pump Room	16	and Aquae Sulis	23	Banqueting Room &		Conferences		Roman Baths and		Other Events	48	Catering	52
Ball Room	12	Great Bath	20	Kingston and		Aix-En-Provence Room	28	and Meetings	34	Pump Room	43			Here To Help You	54
Tea Room	13	Pump Room	21	drawing room	23	Council Chamber &		Assembly Rooms	37	Victoria Art Gallery	43			Venues Overview	56
Great Octagon	14	Terrace and				Brunswick Room	29	Roman Baths and		Assembly Rooms	44			Capacities	60
Card Room	15	Reception Hall	22					Pump Room	38	Guildhall	45			We'd Love To Meet You	62
Fashion Museum	15							Guildhall	39						



If you would like to make an appointment to view our venues, we would be delighted to show you around.  
Please call 01225 477786 / 477873 / 477782 or email [bath\\_venues@bathnes.gov.uk](mailto:bath_venues@bathnes.gov.uk)

Our website, [www.bathvenues.co.uk](http://www.bathvenues.co.uk), contains useful information including special offers and discounts, supplier information, links to photographers' blogs and additional images.

Please also visit our Facebook page:  
[www.facebook.com/  
 BathsHistoricBuildings](http://www.facebook.com/BathsHistoricBuildings)

Follow us on Twitter @bathvenues

## MAKE A DATE

If you would like to hire a venue, you can book through any member of the team.

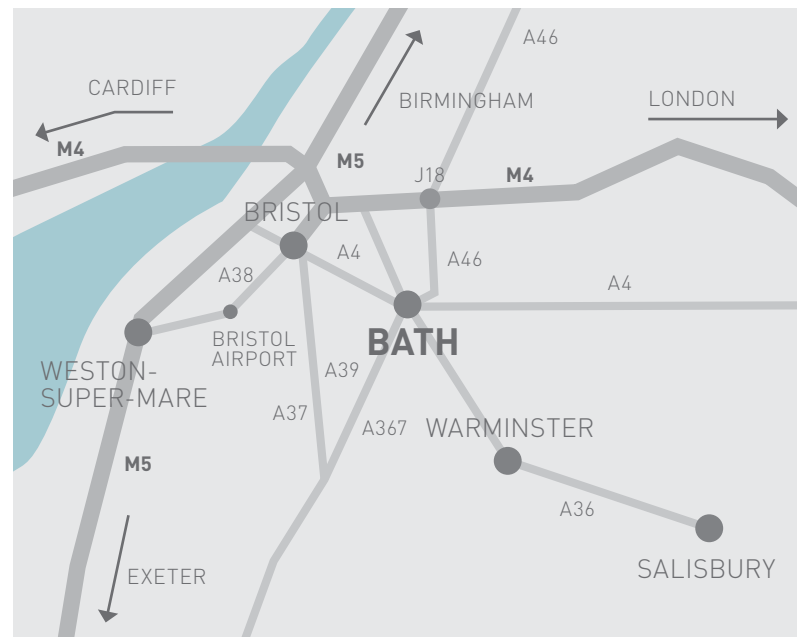
In order to confirm your booking we will require a 25% deposit, a signed hire agreement and a booking form within 14 days of booking.



Bath's Historic Venues  
www.bathvenues.co.uk  
01225 477786 / 477873 / 477782  
bath\_venues@bathnes.gov.uk

twitter: @bathvenues

facebook: [www.facebook.com/BathsHistoricBuildings](http://www.facebook.com/BathsHistoricBuildings)



## GETTING HERE

**London to Bath:** 115 miles,  
120 minutes by car, 85 minutes by train

**Bristol to Bath:** 13 miles, 30 minutes  
by car, 12 minutes by train

**Birmingham to Bath:** 100 miles,  
90 minutes by car, 100 minutes  
by train

**Exeter to Bath:** 105 miles,  
110 minutes by car, 95 minutes by train

**Cardiff to Bath:** 57 miles, 70 minutes  
by car, 65 minutes by train

Design by Steers McGillan Eves Design

<b>Our Venues</b>	<b>4</b>	<b>Roman Baths and Pump Room</b>	<b>16</b>	Temple Pediment and Aquae Sulis	23	<b>Guildhall</b>	<b>24</b>	<b>Victoria Art Gallery</b>	<b>30</b>	<b>Drinks And Dinners</b>	<b>40</b>	<b>Parties</b>	<b>46</b>	<b>Further Information</b>	<b>50</b>
<b>Assembly Rooms</b>	<b>8</b>	Great Bath	20	Kingston and		Banqueting Room &		<b>Conferences and Meetings</b>	<b>34</b>	Roman Baths and		<b>Other Events</b>	<b>48</b>	<b>Catering</b>	<b>52</b>
Ball Room	12	Pump Room	21	drawing room	23	Aix-En-Provence Room	28	Assembly Rooms	37	Pump Room	43			<b>Here To Help You</b>	<b>54</b>
Tea Room	13	Terrace and				Council Chamber &		Roman Baths and		Victoria Art Gallery	43			<b>Venues Overview</b>	<b>56</b>
Great Octagon	14	Reception Hall	22			Brunswick Room	29	Pump Room	38	Assembly Rooms	44			<b>Capacities</b>	<b>60</b>
Card Room	15							Guildhall	45					<b>We'd Love To Meet You</b>	<b>62</b>
Fashion Museum	15							Guildhall	39						





Bath & North East  
Somerset Council

Bath's Historic Venues  
[www.bathvenues.co.uk](http://www.bathvenues.co.uk)  
01225 477786 / 477873 / 477782  
[bath\\_venues@bathnes.gov.uk](mailto:bath_venues@bathnes.gov.uk)

Kristy Field